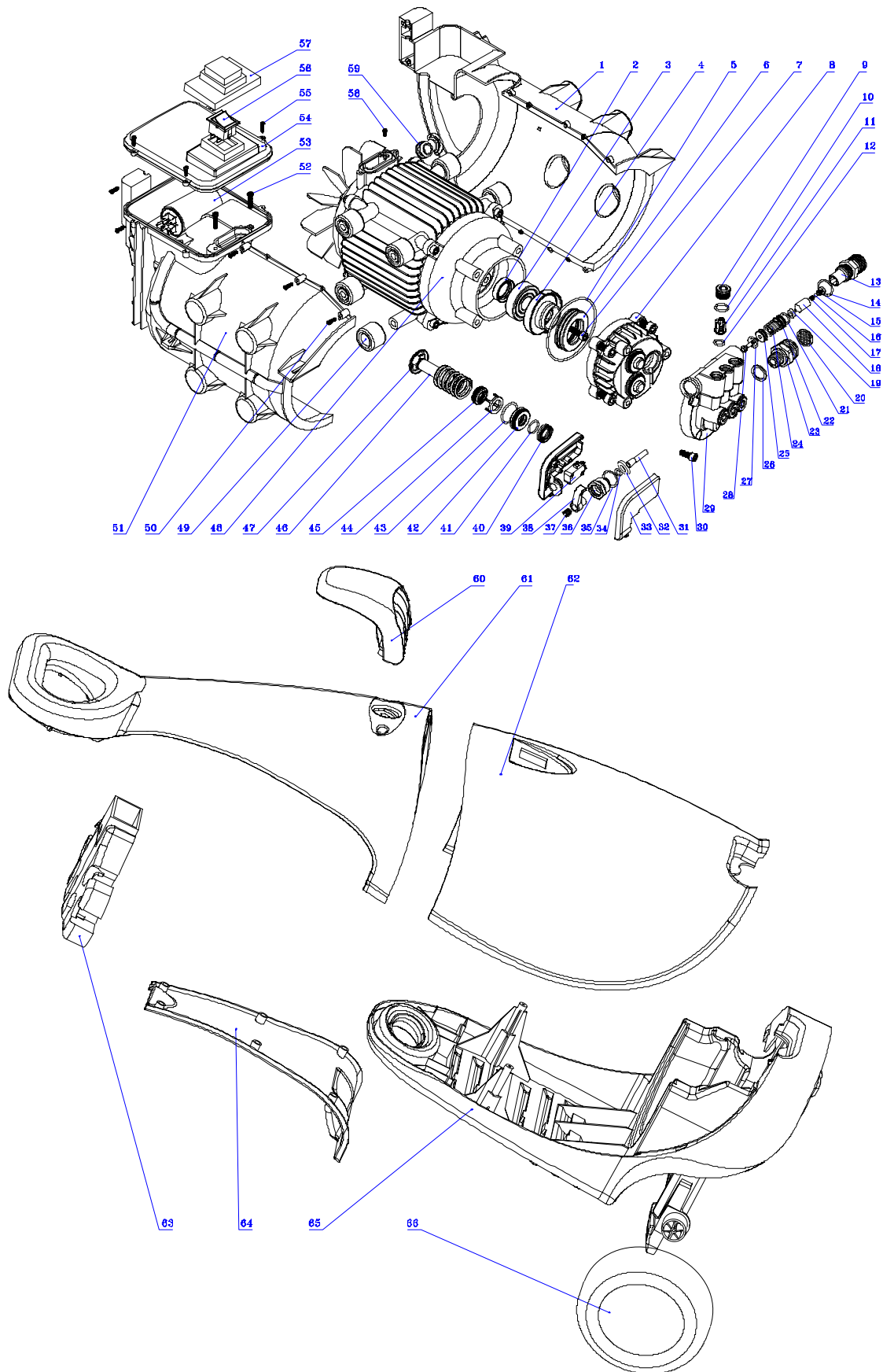


# APW-150EP



| Machine | Explode | Code  | Description                    | Stocked Line |
|---------|---------|-------|--------------------------------|--------------|
| Y068    | 1       | AA433 | Left Motor Cover               | ✓            |
| Y068    | 2       | AA434 | Frame Oil Seal                 | ✓            |
| Y068    | 3       | AA435 | Bearing                        | ✓            |
| Y068    | 4       | AA436 | Bearing Housing                | ✓            |
| Y068    | 5       | AA437 | O-Ring                         | ✓            |
| Y068    | 6       | n/a   | Bearing                        | n/a          |
| Y068    | 7       | AA439 | Bolt                           | ✓            |
| Y068    | 8       | AA440 | Pump Body                      | ✓            |
| Y068    | 9       | AA441 | Washer In/Out Valve Cap        | ✓            |
| Y068    | 10      | n/a   | O-Ring                         | n/a          |
| Y068    | 11      | AA443 | Valve, Water Inlet/Outlet      | ✓            |
| Y068    | 12      | AA444 | O-Ring                         | ✓            |
| Y068    | 13      | AA445 | Water Out let Joint            | ✓            |
| Y068    | 14      | n/a   | O-Ring                         | n/a          |
| Y068    | 15      | AA447 | Valve Cap for the Core         | ✓            |
| Y068    | 16      | AA448 | Ball                           | ✓            |
| Y068    | 17      | AA489 | Spring                         | ✓            |
| Y068    | 18      | AA450 | Valve Core, Copper             | ✓            |
| Y068    | 19      | AA451 | Valve Base Plastic             | ✓            |
| Y068    | 20      | AA452 | Filter                         | ✓            |
| Y068    | 21      | n/a   | O-Ring                         | n/a          |
| Y068    | 22      | AA454 | Piston, Copper                 | ✓            |
| Y068    | 23      | AA455 | Joint water inlet              | ✓            |
| Y068    | 24      | n/a   | Spring                         | n/a          |
| Y068    | 25      | AA457 | Base Load release Valve Copper | ✓            |
| Y068    | 26      | n/a   | O-Ring                         | n/a          |
| Y068    | 27      | n/a   | O-Ring                         | n/a          |
| Y068    | 28      | AA460 | Core Load release valve        | ✓            |
| Y068    | 29      | AA461 | Pump Head                      | ✓            |
| Y068    | 30      | AA642 | Screw Internal Hexangonal      | ✓            |
| Y068    | 31      | AA463 | Top Lance for the switch       | ✓            |
| Y068    | 32      | n/a   | Spring Base                    | n/a          |
| Y068    | 33      | AA465 | Down Cover pressure switch     | ✓            |
| Y068    | 34      | AA444 | O-Ring                         | ~            |
| Y068    | 35      | n/a   | O-Ring                         | n/a          |
| Y068    | 36      | AA468 | Screw Connect Copper           | ✓            |
| Y068    | 37      | AA469 | Spring                         | ✓            |
| Y068    | 38      | AA470 | Handspike                      | ✓            |
| Y068    | 39      | AA471 | Microswitch                    | ✓            |
| Y068    | 40      | AA472 | V-Ring                         | ✓            |
| Y068    | 41      | n/a   | O-Ring                         | n/a          |
| Y068    | 42      | AA474 | Interspace Ringer              | ✓            |
| Y068    | 43      | n/a   | O-Ring                         | n/a          |
| Y068    | 44      | AA476 | Interspace Seperating Ringer   | ✓            |
| Y068    | 45      | n/a   | Frame Oil Seal                 | n/a          |
| Y068    | 46      | AA478 | Plunger Spring                 | ✓            |
| Y068    | 47      | AA479 | Plunger                        | ✓            |
| Y068    | 48      | AA480 | Plunger Clip                   | ✓            |
| Y068    | 49      | AA481 | Motor                          | ✓            |
| Y068    | 50      | AA482 | Orientation Ring               | ✓            |
| Y068    | 51      | AA483 | Self Acting Screw              | ✓            |
| Y068    | 52      | AA484 | Right Motor Cover              | ✓            |
| Y068    | 53      | AA485 | Capacitor                      | ✓            |
| Y068    | 54      | AA486 | Connectin Box                  | ✓            |
| Y068    | 55      | n/a   | Self Acting Screw              | n/a          |
| Y068    | 56      | AA488 | Switch                         | ✓            |
| Y068    | 57      | AA489 | Switch Cover                   | ✓            |
| Y068    | 58      | AA490 | Grounding Screw                | ✓            |
| Y068    | 59      | AA491 | Powercord Jacket               | ✓            |
| Y068    | 60      | AA492 | Cable Hook                     | ✓            |
| Y068    | 61      | AA493 | Handle                         | ✓            |
| Y068    | 62      | AA494 | Front Cover                    | ✓            |
| Y068    | 63      | AA495 | Hook For Gun                   | ✓            |
| Y068    | 64      | AA496 | Back Covering                  | ✓            |
| Y068    | 65      | AA497 | Base                           | ✓            |
| Y068    | 66      | AA498 | Wheel                          | ✓            |
| Y068    | n/a     | AA499 | HPC for Connector              | ✓            |
| Y068    | n/a     | AA500 | Rotary Brush                   | ✓            |
| Y068    | n/a     | AA501 | Fix Brush                      | ✓            |
| Y068    | n/a     | AA502 | Turbo Lance                    | ✓            |